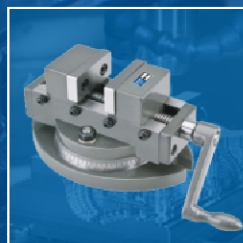
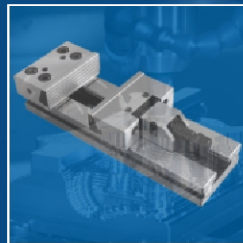


# nicon

PRECISION VICES



VICES & WORK HOLDING DEVICES  
PRODUCT CATALOGUE



# WE MAKE MASTER PIECES

**nicon**  
PRECISION VICES

## About US...

Y.H. Tools Manufacturers Pvt. Ltd. came into existence in the year 1979 on a very small scale employing a few skilled labour who pioneered in Vices and Engineering Tools with firm devotion and under strong leadership of our Founder Late Mr. Harbans Singh.

Owing to our consistent efforts, dedication, innovation and consistent performance, we have successfully built long standing relations with our customers. We have a large and extremely satisfied client base not only in India, but all over the world.

Our Products are fabricated using A-grade raw materials like cast iron, S.G. Iron & Steel, etc. All

**Y.H. Tools Manufacturers Pvt. Ltd.**  
is the first Company in India to  
produce vices with latest  
technology.



these materials are purchased from selected reputed suppliers of the market. As a result of this, only flawless products are manufactured. These products find application in a large number of industries. They are competitively priced and are highly durable and long lasting.

Quality is synonymous to the products offered by Y.H. Tools Manufacturers. We give full value for the money invested by our esteemed clients. A team of quality monitors keeps a strict vigil on the production process, thereby leaving no scope for any loopholes.

Y.H. Tools Manufacturers Pvt. Ltd. has a robust infrastructure. All the machines employed in the production process, are of the latest technology and are extremely cost effective. These machines are made to undergo timely checks to keep a watch on their wear and tear. Upgradation of technology also forms a regular feature with the firm to keep pace with the changing market scenario.





## PRECISION MACHINE VICES

### **GUARANTEE**

Nicon products are guaranteed against any material manufacturing defect. This warranty does not apply to goods which have been altered or misused.

### **IMPORTANT**

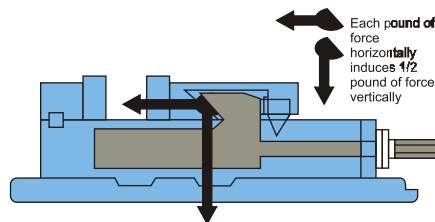
Due to research and development programs, the design and particulars of all items, given in this price list cum catalogue are subject to change without prior notice to anybody.

Code No. N-171

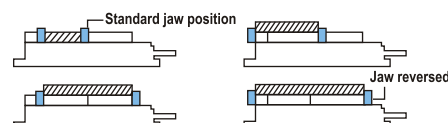
## Lock Down Jaw Machine Vice

Fixed and Swivel Base

Max. Clamping  
Pressure 2500 Kg



Down thrust "Semi Sphere Segment" mechanism eliminates jaw lift and work piece tilt. No. need to hammer the workpiece as in other vices.



Examples of clamping with different jaw mounting positions possible

### Features

- Accuracy in parallelism & squareness within 0.02/100 mm
- Ductile cast iron body.
- Sealed bearing system reduces clamping pressure & increases bearing life.
- High clamping force can be achieved by effortless handle movement which eliminates hammering on handle.
- Hardened bed and jaws maintain accuracy for long time.
- No work piece tilt after clamping
- All parts interchangeable and available as spares.

### Product Description

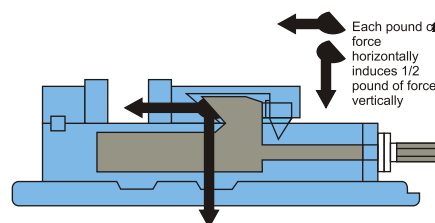
Model	Jaw Width	Max. Jaw Opening With Standard Jaw Position	Max. Jaw Opening with Jaws Reversed	Jaw Depth	Overall Length	Overall Height with Swivel Base	Overall Height without Swivel Base	Net Weight without Swivel Base
MMV 100	110	105	270	37	330	135	95	18 kg
MMV 150	160	155	365	48	420	160	115	35 kg
MMV 200	210	250	480	60	575	190	145	65 kg

Code No. N-131

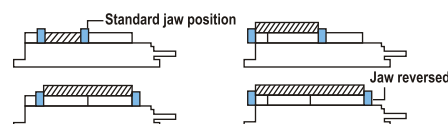
## Precision Compact Lock Down Jaw Machine Vice

Fixed Base

Max. Clamping  
Pressure 2500 Kg



Down thrust "Semi Sphere Segment" mechanism eliminates jaw lift and work piece tilt. No. need to hammer the workpiece as in other vices.



Examples of clamping with different jaw mounting positions possible

### Features

- Accuracy in parallelism & squareness within 0.02/100 mm.
- Ductile cast iron body.
- This vice is the earliest vise that can be vertical or on either side.
- Enhanced body structure reduces the deflection in operation while the vise mounted vertical or horizontal.
- High clamping force can be achieved by effortless handle movement which eliminates hammering on handle.
- All parts interchangeable and available as spares.
- Hardened bed and jaws maintain accuracy for long time.
- No work piece tilt after clamping

### Product Description

Model	Jaw Width	Max. Jaw Opening With Standard Jaw Position	Max. Jaw Opening with Jaws Reversed	Jaw Depth	Overall Length	Overall Height	Net Weight
CMV 150	152	150	380	44.5	455	117	31 Kg



**Code No. N-101**

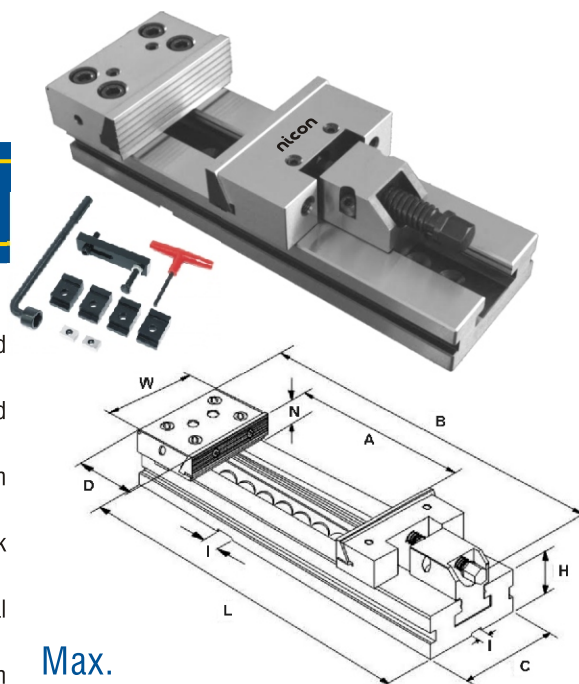
## Precision Modular Vice

### Features

- Modular Vice designed for precision milling, grinding and widely used with CNC and standard milling machines.
- High alloyed quality resistance steel, case hardened HRC 60  $\pm$ 2 is used in all body and accessories of vice to give maximum rigidity, high performance & no wear.
- Both jaws plates are in pull down angle. This ensure, during the clamping operation a down load run of the work piece against the vice base and thus a precise and safely clamping
- All components of vice are interchangeable with perfect alignment to provide different work holding solutions.
- The space saving design and solid construction allow a maximum blocking ratio to total overall dimension of the vice.
- For extra tapped hole with ground back jaw rear face increase maximum opening capacity with the addition of jaws extensions.

### Product Description

Model No.	A	L	D	H	B	C	I	N	W	Weight in Kgs.
PMV150	225	445	80	50	510	125	16	50	146	27



**Max.  
Clamping Pressure  
3500 Kg.**

**Code No. N-181**

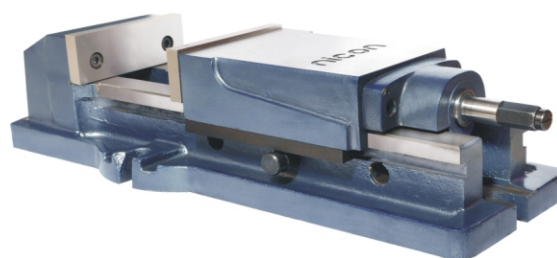
## Hydraulic Machine Vice

### Features

- Ruggedly constructed for milling, drilling, shaping, grinding and many other machine shop applications.
- Body made of high quality ductile cast iron to resist deflection or bending.
- Hardened and Ground slide ways.
- Concealed spindle for protection against chip and dirt.
- Hydraulic booster system for maximum clamping pressure with minimum force.
- Hydra-booster system is guaranteed for using 1 year limited.
- Accuracy in squareness is 0.02/100mm.
- Quick of clamping, locking and easy of operation.
- The hydraulic oil number is #68

### Product Description

Model No.	Jaw Width	Jaw Depth	Max. Opening	Opening Size for Capacity			Overall Length	Overall Length in 300mm Opening	Overall Width	Overall Height without S/Base	Max. Clamping Pressure in Kgs.	Weight in Kgs.
				C1	C2	C3						
HMV-150	152	52	300	0-100	97-200	197-300	610	800	230	135	4500	60



**Max.  
Clamping Pressure  
4500 Kg.**

**Code No. N-151S**

## Precision Milling Machine Vice

Fixed and Swivel Base

### Features

- Study and accurately made machine vices from close grained casting.
- Jaws are made of special steel properly hardened.
- Vice can be converted from swivel base to fix by removing the base.
- Accuracy in Parallelism is 0.02/100 mm
- Flatness of bed 0.02/100 mm.
- Fine acme thread screw.
- The swivel base is graduated fully through 360°.
- Crank handle is made of all steel providing loaded mechanism providing positive grip.

### Product Description

Size in Inches	3	4	6	8	10	12
Wide of Jaws in mm	75	100	150	200	250	300
Opening of Jaws in mm	75	100	150	200	250	300
Depth of Jaws in mm	30	38	48	60	75	75
Length overall in mm	275	310	440	475	720	810
Height over all swivel base in mm	90	110	140	165	180	190
Height overall without swivel in mm	70	80	100	115	130	135
Weight (Approx.) Swivel base in Kgs.	10	16	38	70	130	150
Weight (Approx.) Fixed base in Kgs.	7	12	28	55	100	120



**Code No. N-153**

## Tilting & Swiveling Vice

### Features

- Body of vice made of close grained cast iron.
- Horizontal Swivel movement 360°, Vertical swivel movement 90°.
- Quick alignment to machine tables using a longitudinal slot.
- Crank handle is made of unbreakable steel.
- Flatness of bed 0.02/100 mm.
- Positive locking to withstand heavy loads.
- Fine acme thread screw made of special steel.
- Hardened and ground jaws.
- Accuracy in Parallelism is 0.02/100 mm

### Product Description

Size in Inches	2	3	4	5	6	8
Width of Jaws in mm	50	75	100	125	150	200
Opening of Jaws in mm	50	75	100	125	150	200
Depth of Jaws in mm	25	34	38	45	50	60
Height overall in mm	100	135	150	180	195	230
Weight (Approx.) in Kgs.	3.5	8	18	32	40	60





**Code No. N-154**

## 3-Way Tilt & Swivel Angle Vice



### Features

- Body is made of graded cast iron.
- Hardened and accurately ground jaws.
- Upper angle base can incline from the horizontal position to the vertical position.
- The lower angle setting base can incline upto 45° in both right and left directions.
- Fine acme thread screw.
- This vice can set up at any angle with positive locking.
- The entire unit may be swivelled on a base plate through 360°.

### Product Description

Size in Inches	2	3	4	5	6
Width of Jaws in mm	50	75	100	125	150
Opening of Jaws in mm	50	75	100	125	150
Depth of Jaws in mm	25	34	38	45	48
Height overall in mm	120	160	190	235	254
Weight (Approx.) in Kgs.	4	10	22	36	50



**Code No. N-156**

## Universal Machine Vice



### Features

- Body of vice made of close grained cast iron.
- Accurately ground jaws made out of special tool steel for firm grip.
- All swivelling movements have positive locking and the job can be locked at any compound angle.
- Accurately designed for use on surface, universal tool and cutter grinding machines.

### Product Description

Size in Inches	2	3	4	6
Jaws Width in mm	50	75	100	150
Jaws Depth in mm	23	35	38	48
Jaws Opening in mm	50	75	100	150
Swivel Range	360°	360°	360°	360°
Tilting Range	Uni.	Uni.	Uni.	Uni.
Approx. Height	138	225	235	280
Weight (in Kgs.)	4	12	20	35



Code No. N-158

## Precision Self Centering Vice



### Features

- Sturdy and accurately made machine vice from graded cast iron.
- Jaws are made of special tool steel properly hardened.
- Vice can be converted from swivel base to fix by removing the base.
- Crank handle is made of unbreakable ductile iron steel providing loaded mechanism providing positive grip.
- Fine Acme thread screw.
- The swivel base is graduated fully through 360°.
- Quick alignment to machines through longitudinal slot provided in base.

### Product Description

Size in Inches	4	5	6
Width of Jaws in mm	100	125	150
Opening of Jaws in mm	100	125	150
Depth of Jaws in mm	38	46	48
Swivel Range	360°	360°	360°

Code No. N-155

## Precision Self Centering Shaft Vice



### Features

- Body of vice made of close grained Cast Iron.
- Recommended for round Jobs.
- Hardened & Ground Jaws.
- Fine Acme thread screw.

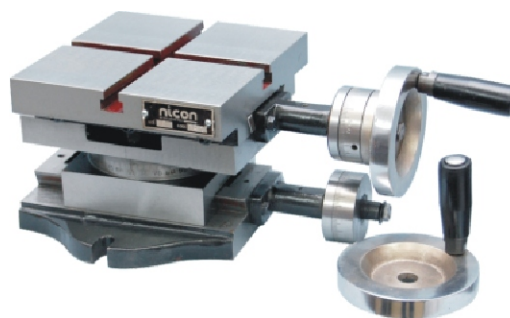
### Product Description

Width of Jaws	Shaft Holding Capacity in mm	Weight in Kg.
80 mm	10-50	18.0
100 mm	10-80	20.0
150 mm	50-150	50.0



**Code No. N-157**  
**Compound Sliding Table**

**With Calibrated Wheels**



**Features**

- Close grained graded casting properly machined and grinded with a accurate process provides accuracy well within 0.01mm / 100 mm tolerance.
- Dovetailed slides have adjustable steel ribs for smooth running and adjustment
- Fine Acme thread screw.

**Product Description**

Size in Inches	6x6	8x8	10x10	12x12	12x8
Table size in mm	150x150	200x200	250x250	300x300	300x200
Height in mm	115	120	130	145	145
Length overall in mm	300	350	350	510	510
T. Slot in mm	10	10	13	14	14
Travel both ways in mm	100	125	125	200	200
Calibration	90s	90s	90s	90s	90s
Wheel graduation in inches	.001	.001	.001	.002	.002
Weight Approx in kgs.	13	18.5	24	44	38

**Code No. N-175**  
**Rotary Milling Table**

**Horizontal Cum Vertical**



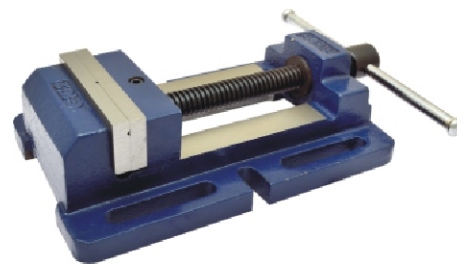
**Features**

- Direct reading to 2 minute for size 6",8" and 10" on hand wheel scale.
- Accuracy : Maximum error 4 minutes of circular division using hand wheels.
- Working surface rotates in its own plane to within 0.03 mm.
- Horizontal and Vertical supporting surface square with 0.01 mm / 100 mm.
- Direct reading to 1 minute for size 12" on hand wheel scale.
- Table flatness within 0.01 mm / 100 mm.
- Centre bush bore is true to table axis within 0.03 mm.

Size in Inches	6	8	10	12
Dia of table (in mm)	150	200	250	300
Table T-slot size (in mm)	10	13	13	16
Centre Bush Bore (Morse Taper)	2	3	3	3
Worm and gear Ratio	1:72	1:72	1:72	1:120
Wheel calibration (in minutes)	2	2	2	1
Overall Height- Horizontal (in mm)	95	105	110	130
Overall Height - Vertical (in mm)	240	300	330	425
Weight (in kgs.)	16	27	42	65

**Code No. N-162**

## **Drill Press Vice Unbreakable Steel Body**



### **Features**

- Manufactured from unbreakable ductile iron. This vice have a precision ground base and vice bed for smooth lateral movement of the movable jaw.
- Longitudinal and transversal prisms in the fixed jaw allow for firm gripping of round jobs of different sizes both horizontally and vertically.
- Fine acme thread screw.

### **Product Description**

Size	Jaws Width	Jaw Opening	Jaw Depth	Weight in Kg
3" (75 mm)	80	75	40	4.0
4" (100 mm)	100	100	46	7.0
5" (125 mm)	125	125	48	10.0
6" (150 mm)	150	150	55	14.0
8" (205 mm)	205	200	58	25.0

**Code No. N-163**

## **Drill Press Vice Deluxe Model**

**Unbreakable Steel Body**



### **Features**

- Manufactured from graded cast iron, this vice have a precision ground base and vice bed for smooth lateral movement of the movable jaw
- Longitudinal and transversal prisms in the fixed jaw allow for firm gripping of round jobs of different sizes both horizontally and vertically.
- Fine acme thread screw.
- Extra deep jaw depth.

### **Product Description**

Size	Jaws Width	Jaw Opening	Jaw Depth	Weight in Kg
3" (75 mm)	80	75	45	5.0
4" (100 mm)	100	100	50	8.0
6" (150 mm)	150	150	58	17.0

**Code No. N-164**

## **Precision Drill Machine Vice**



### **Features**

- This vice is specially designed for use by professionals who require a heavy vice work.
- Manufactured from close grained cast iron, this vice offers a ground vice bed for smooth & consistent jaw movement.
- Jaws are hardened & ground with cross patterned 90° V-grooves in the stationary jaw facilitating holding of round jobs both horizontally & vertically.

Size	Jaws Width	Jaw Opening	Jaw Depth	Weight in Kg
3" (75 mm)	80	88	28	4.00
4" (100 mm)	100	100	35	7.50
5" (125 mm)	120	150	42	13.50
6" (150 mm)	150	170	50	22.50



**Code No. N-170**

## **3-Way Precision Drill Press Vice (Unigrip)**



### Features

- Manufactured from graded cast iron, this vice have a precision ground base and bed.
- This vice is available with 3 mounting options via 2 additional precisely ground surfaces: end face and side face. This allows for drilling along all axes with a single setting of the job and holding of long work pieces which are cumbersome and difficult to manage in regular vices
- Fine acme thread screw.

### Product Description

Size	Jaws Width	Jaw Opening	Jaw Depth	Weight in Kg
4" (100 mm)	100	94	30	6.0

**Code No. N-167**

## **Precision Drill Press Vice (Unigrip)**



### Features

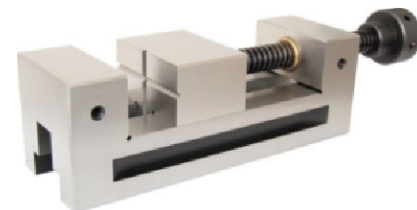
- Manufactured from graded cast iron, this vice have a precision ground base and vice bed for smooth lateral movement of the movable jaw
- Longitudinal and transversal prisms in the fixed jaw allow for firm gripping of round jobs of different sizes both horizontally and vertically.
- Fine acme thread screw.

### Product Description

Size	Jaws Width	Jaw Opening	Jaw Depth	Weight in Kg
3" (75 mm)	80	75	30	3.5
4" (100 mm)	100	92	30	6.0
5" (125 mm)	125	110	35	9.0

**Code No. N-168**

## **Precision Tool Makers Steel Vice (Screw Type)**



### Features

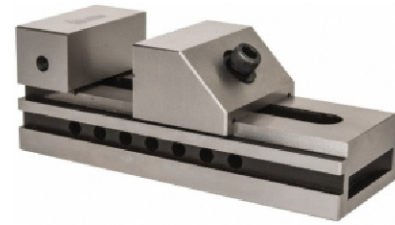
- Clamping and releasing is through a threaded spindle with precision cut square threads for smooth operation
- Vice spindle moves in a specially designed gun metal bush which reduces wear this enhancing life of the vice
- These vices are mainly used in tool manufacturing on grinding and milling machines, engraving & jig boring operations.
- All vice surfaces are precision ground.

### Product Description

Size	Jaws Width	Jaw Opening	Jaw Depth	Weight in Kg
3" (75 mm)	75	110	40	5.0
4" (100 mm)	100	125	45	8.0
6" (150 mm)	150	175	50	13.0

**Code No. N-169**

## Precision Tool Makers Steel Vice (Pin Type)



### Features

- The rapid positioning notches allow the vice to be locked in any position by means on an allen key provided with the vice
- Vee grooves in the sliding jaw, both horizontal and vertical, facilitate holding of round jobs. Jaw pressure on work piece is forward and downward for repeatable positioning and maximum holding power
- All vice surfaces are precision ground.

### Product Description

Size	Jaws Width	Jaw Opening	Jaw Depth	Weight in Kg
2" (50 mm)	50	90	25	2.0
3" (75 mm)	75	110	35	3.5
4" (100 mm)	100	125	45	6.0
6" (150 mm)	150	150	50	12.0

**Code No. N-168S**

## Precision Tool Makers Sine Vice (Screw Type)



### Features

- Manufacturing from special alloy steel, these solid Sine Vices are fully hardened (55 to 60 HRC) and tempered, mounted on to a precision hinges bottom plate.
- All surface of the vice are precessional ground for maximum accuracy.
- These are very useful for manufacturing processes that require the highest standards of clamping accuracy at desired angles
- Very small angles to be set with ease using standard gauge blocks.

### Product Description

Size	Jaws Width	Jaw Opening	Jaw Depth	Height Overall	Length Overall
3" (75 mm)	75	85	40	100	205

**Code No. N-169S**

## Precision Tool Makers Sine Vice (Pin Type)



### Features

- Manufacturing from special alloy steel, these solid Sine Vices are fully hardened (55 to 60 HRC) and tempered, mounted on to a precision hinges bottom plate.
- All surface of the vice are precessional ground for maximum accuracy.
- These are very useful for manufacturing processes that require the highest standards of clamping accuracy at desired angles
- Very small angles to be set with ease using standard gauge blocks.

### Product Description

Size	Jaws Width	Jaw Opening	Jaw Depth	Height Overall	Length Overall
3" (75 mm)	75	105	40	102	195



**Code No. N-141**

## **Mechanics' Bench Vice (Heavy Duty)**



### Features

- Body of vice made of ductile cast iron.
- Jaws of vice made of special carbon steel hardened & serrated to ensure a fast non slip.
- Fully CNC machined on all bearing surfaces for smooth and trouble free operation
- The nut is dovetailed into the body.
- Twin start rolled thread screw.
- Vice available in fixed & swivel base.
- Unbreakable SG Cast Iron nut can be replaced when worn.

### Product Description

Size	Opening of Jaws in mm	Weight Approx for Fixed Base in Kg	Weight Approx for Swivel Base in Kg
3" (75 mm)	100	5	6
4" (100 mm)	125	12	14
5" (125 mm)	170	21	24
6" (150 mm)	210	30	33
8" (205 mm)	240	38	42

**Code No. N-161**

## **Bench Vice Unbreakable Steel Body**

**with Pipe Jaws**



### Features

- Unbreakable steel cast body.
- Jaws of vice made of special carbon steel hardened & serrated to ensure a fast non slip.
- Vice available in fixed & swivel base.
- Fully CNC machined on all bearing surfaces for smooth and trouble free operation
- Fine acme thread screw
- Pipe Jaws provided for round jobs.
- Unbreakable SG Cast Iron nut can be replaced when worn.

### Product Description

Size	Opening of Jaws in mm	Weight Approx for Fixed Base in Kg	Weight Approx for Swivel Base in Kg
3" (75 mm)	100	4	5
4" (100 mm)	125	9	10
5" (125 mm)	150	13	14
6" (150 mm)	175	17	19
8" (205 mm)	225	25	27

**Code No. N-501**

## **Bench Vice Cross Rib**



### Features

- Body of vice made of ductile cast iron.
- Jaws of vice made of special carbon steel hardened & serrated to ensure a fast non slip.
- Fully CNC machined on all bearing surfaces for smooth and trouble free operation
- The nut is dovetailed into the body.
- Fine acme thread screw.
- Vice available in fixed & swivel base.
- Unbreakable SG Cast Iron nut can be replaced when worn.

### Product Description

Size	Opening of Jaws in mm	Weight Approx for Fixed Base in Kg
3" (75 mm)	100	5
4" (100 mm)	125	10.5
4½" (115 mm)	140	12
5" (125 mm)	150	15
6" (150 mm)	175	19
8" (205 mm)	225	30
10" (250 mm)	300	55
12" (300 mm)	330	58

**Code No. N-160**

## **Bench Vice Double Rib Heavy Duty**



### Features

- Body of vice made of ductile cast iron.
- Jaws of vice made of special carbon steel hardened & serrated to ensure a fast non slip.
- Fully CNC machined on all bearing surfaces for smooth and trouble free operation
- Fine acme thread screw.
- Vice available in fixed & swivel base.
- Unbreakable SG Cast Iron nut can be replaced when worn.

### Product Description

Size	Opening of Jaws in mm	Weight Approx for Fixed Base in Kg	Weight Approx for Swivel Base in Kg
3" (75 mm)	100	6	7
4" (100 mm)	125	12	13
4½" (115 mm)	140	16	18
5" (125 mm)	170	21	23
6" (150 mm)	190	25	27
8" (205 mm)	250	38	40



**Code No. N-186**

## **Bench Vice Extra Heavy Duty**



### **Features**

- Unbreakable SG Cast Iron Body.
- Jaws of vice made of special carbon steel hardened & serrated to ensure a fast non slip.
- Fully CNC machined on all bearing surfaces for smooth and trouble free operation
- Two start rolled acme thread screw.
- Vice available in fixed & swivel base.
- Unbreakable SG Cast Iron nut can be replaced when worn.

### **Product Description**

Size	Opening of Jaws in mm	Weight Approx for Fixed Base in Kg	Weight Approx for Swivel Base in Kg
3" (75 mm)	100	9	10
4" (100 mm)	125	13	15
5" (125 mm)	150	20	24
6" (150 mm)	175	31	35
8" (205 mm)	225	50	55

**Code No. N-182**

## **Precision Tool Room Bench Vice**



### **Features**

- Rear jaws sliding vice made of close grained graded cast iron.
- Hardened and ground jaws.
- Horizontal and vertical v groove provide in jaws for round section work.
- Dove tail sliding guideways ensure jibless jaw alignment.
- All parts of vice are interchangeable

### **Product Description**

Size	Opening of Jaws in mm	Throat Depth from Jaws in mm	Weight in Kg
3" (75 mm)	75	30	5
4" (100 mm)	105	45	8
5" (125 mm)	140	65	18
6" (150 mm)	170	75	30
8" (205 mm)	240	80	40

**Code No. N-801**

## **Multi Purpose Vice Heavy Duty**



### Features

- Body of vice made of ductile cast iron.
- Vice available in swivel base only.
- Swivel base for mounting points and 360° rotation.
- Fused steel handle will be bend before vice can be over stressed.
- Jaws of vice made of special carbon steel hardened & serrated to ensure a fast non slip.
- Two start rolled acme thread screw.
- Rotating head for flexibility in jaw uses & replacement.
- Integrated pipe jaws for holding round jobs.

### Product Description

Size	Opening of Jaws in mm	Throat Depth	Weight in Kg
5" (125 mm)	120	75	15

**Code No. N-515**

## **Bench Vice Economy Model**



### Features

- Body made of close grained cast iron.
- Unbreakable SG Cast Iron nut can be replaced when worn.
- Ideal for general purpose light jobs.
- Jaws of vice made of special carbon steel hardened & serrated to ensure a fast non slip.
- Fine acme thread screw.
- The nut is dovetailed into the body.

### Product Description

Size	Opening of Jaws in mm	Weight Approx for Fixed Base in Kg	Weight Approx for Swivel Base in Kg
3" (75 mm)	80	5	5.5
4" (100 mm)	110	7	8
5" (125 mm)	130	11	12
6" (150 mm)	160	14.5	16.5
8" (200 mm)	210	22	24

**Code No. N-191**  
**Professional Bench Vice**

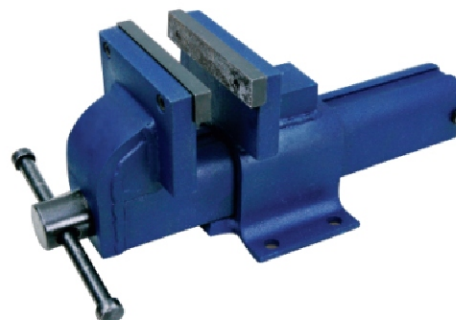


**Features**

- Unbreakable SG Cast Iron Body.
- Pipe Jaws provided for round jobs.
- Jaws of vice made of special carbon steel hardened & serrated to ensure a fast non slip.
- Two start rolled acme thread screw.
- Vice available in fixed & swivel base.

Size	Opening of Jaws in mm	Weight Approx for Fixed Base in Kg	Weight Approx for Swivel Base in Kg
3" (75 mm)	90	5	6
4" (100 mm)	115	7	8
5" (125 mm)	140	12	13
6" (150 mm)	170	16	18

**Code No. N-192**  
**Professional Fabricated Bench Vice**



**Features**

- Integrated anvil for shaping & bending.
- Fine acme thread screw & box nut.
- With an all steel construction, these fixed base vices are built to withstand the shocks of hammering, chipping and other tough application.

Size	Jaw Width in mm	Opening of Jaws in mm	Weight Approx in Kg
4" (100 mm)	100	120	6
5" (125 mm)	150	150	18
6" (150 mm)	200	200	37
8" (200 mm)	250	250	43

**Code No. N-513**  
**Offset Bench Vice (Fabricated Body)**



**Features**

- Heavy Duty Fabricated Body
- Offset Jaw designed allows for unlimited particular depth for holding long jobs without any obstruction from the vice slide.
- With an all steel construction, these fixed base vices are built to withstand the shocks of hammering, chipping and other tough application
- Fine acme thread screw & box nut

Size	Jaw Width in mm	Opening of Jaws in mm	Weight Approx in Kg
4" (100 mm)	100	120	10
5" (125 mm)	125	145	18
6" (150 mm)	150	175	22
8" (200 mm)	200	200	37



Code No. N-176&528C

## Wood Working Vice



### Features

- These vices are manufactured from close-grained grey cast iron for long trouble free service. Accurately machined housings assure smooth sliding movement. Accurately fitted solid steel guide rods reduce wear and tear giving the vices a smooth and true parallel action, free of side or cross deflection
- Vice jaws are equipped with a "TOE – IN" feature. When fully closed, the jaws meet only at the top to provide even clamping on the whole depth of the work piece

Size	Jaws Width		Jaw Opening		Weight in Kg	
	176	528C	176	528C	176	528C
6" (150 mm)	150	150	175	150	5.0	3.0
7" (175 mm)	175	175	200	175	7.0	4.0
8" (205 mm)	205	--	225	--	11.0	--
9" (225 mm)	225	--	250	--	16.0	--

Code No. N-177

## Wood Working vice Quick Release



### Features

- Manufactured from close-grained grey cast iron, these robust vices have accurately machined housings for smooth sliding movement and true parallel action free of side or cross movement
- The steel main screw has Butress threads for smooth, accurate and responsive adjustment. Body and sliding jaw have provision for attaching wooden liners to protect the vice, the work piece and working tools

Size	Jaws Width	Jaw Opening	Weight in Kg
7" (175 mm)	175	200	7.0
8" (200 mm)	200	225	11.0
9" (225 mm)	225	250	16.0

Code No. N-503

## Anvil (Steel and Cast Iron Body)



### Features

- Professional quality anvils, these are manufactured from cast steel that allows these to be used for far more rigorous applications than a conventional cast iron anvil. The anvil face is precision ground and provided with Pritchel & Hardy holes. The beak is strong and can be used for bending applications. Anvil body has an attractive oven baked finish. An unbreakable, indispensable tool for any workshop
- This anvil also available in Grey Cast Iron body.

Size in Kgs	Size in Lbs	Size in Kgs	Size in Lbs
5	11	30	66
10	22	40	88
15	33	50	110
20	44	100	220

**Code No. N-507**

## Cast Iron Surface Plate



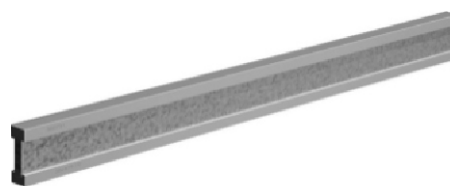
### Features

- These cast iron surface plates provide an accurate reference or datum plane for precision gauging, marking, inspection and tooling setup.
- Cast iron surface plate are made of good quality close grain cast iron as per IS-210:1993 conforming to grade FG-220.
- The meticulous manufacturing processes that are carried out at our premises make these C.I surface plate apt for machine shops, quality control and standard rooms.
- Our precision cast iron surface plates are used in the application where strict accuracy is required hence, these plates are appropriate for high precision work and are ideal for blue matching.

Size in mm	Size in inches
300x300	12x12
300x450	12x18
450x450	18x18
500x500	20x20
600x600	24x24

**Code No. N-701**

## Straight Edge



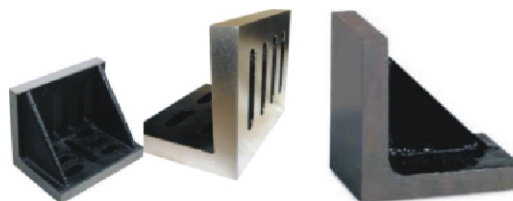
### Features

- Steel straight edges are made using high quality graded cast iron.
- These are widely used for checking straightness and marking purposes.
- Our straight edges are hand scrapped and lapped to achieve the desired accuracy as per standards.

Dimensions L X B X H mm	Straightness Microns um	Parallelism Microns um
300x35x8	12	24
450x35x8	12	24
600x50x8	15	30
1000x50x8	21	42
1200x55x10	25	50
1500x65x12	29	58

**Code No. N-304&305**

## Cast iron Angle Plates



**N-304**

**N-305**

### Features

- Castings of angle plates are stress relieved either by natural aging or by artificial seasoning and hand scrapped or surface grinded for surface finish.
- Angle plates of sizes above 300 mm are webbed to ensure rigidity.
- Slots are machined for easy clamping.

### Product Description of N-304

Size in mm
88x75x63, 112x88x75, 150x125x112, 175x138x112, 200x150x125, 225x175x150, 250x200x150, 300x225x200

### Product Description of N-305

Size in mm
100x100x100, 125x100x100, 125x125x125, 150x125x125, 150x150x150, 200x150x150, 200x200x200, 250x200x200, 250x250x250, 300x250x250, 300x300x300

**Code No. N-302**

## Steel Vee Block & Clamps



### Features

- These Vee blocks are made from selected steel fully hardened to 55-60 HRC.
- The Vee's are ground central, parallel and square with the ends and sides.
- These Vee Blocks are very useful for holding work securely during drilling, milling and grinding operations and also in layout and inspection work.

### Product Description

Block Length mm	Block Width mm	Block Height mm	Width of Small Vee	Width of Large Vee	Clamping Capacity
40	32	32	11	20	25
50	37	37	13	28	32
45	40	36	14	28	32
60	40	47	17	25	30
70	45	37	17	33	37
80	65	65	22	45	50
100	75	75	30	55	75

**Code No. N-303**

## C.I. Vee Block



### Features

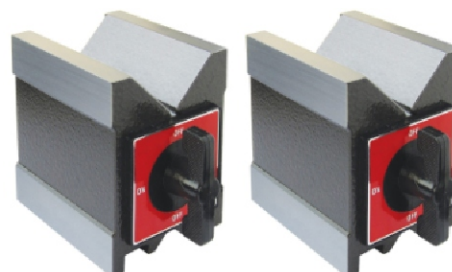
- Made from close grained cast iron, these blocks are precisely ground and machined square and parallel
- The Vee's are 90° centred in true
- The blocks are manufactured and supplied in numbered pairs and come in handy for holding large jobs where clamping is not necessary

### Product Description

Length in mm	Width of Vee in mm	Height in mm	Width in mm
50	22	32	24
75	45	60	33
100	56	65	40
125	62	78	50
150	78	88	62
175	90	115	75
200	113	140	100

**Code No. N-306**

## Magnetic Vee Blocks



### Features

- Designed for versatility and accuracy, these Vee Blocks are ideal for holding round or irregular shapes for scribing, grinding, measuring, machining and testing applications.
- These can be used either ways, up or standing on end, All Vee's and faces can be energised or de energised simultaneously by turning the rotary action control knob.
- Also available with hardened Vee's: 55-60 HRC for increased wear resistance.

### Product Description

Block Length mm	Block Width mm	Block Height mm	Width of Small Vee	Width of Large Vee	Clamping Capacity
150	75	95	25	55	5.0-70.0
100	75	95	22.5	55	5.0-70.0
80	60	95	17.5	43	5.0-60.0



## Code No. N-751 Clamping Kit



- Hardened & Tempered
- Black Finished

MODEL	SUITABLE FOR T SLOT SIZE x SCREW SIZE
NCK 14-12	14xM-12
NCK 16-12	16xM-12
NCK 18-16	18xM-16
NCK 20-16	20xM-16

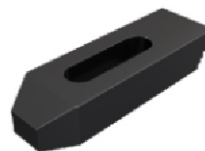
## Code No. N-752 Strap Clamp



- Hardened & Tempered
- Black Finished

MODEL	SUITABLE FOR BOLT	OVERALL SIZE
NSC 12-100	M 12	24x48x160
NSC 12-125	M 12	30x60x160
NSC 16-125	M 16	19x38x100
NSC 16-160	M 16	19x38x125
NSC 20-160	M 20	24x48x125
NSC 20-200	M 20	30x60 x200
NSC 24-250	M 24	36x73 x200
NSC 30-250	M 24	36x73 x250
NSC 24-200	M 30	45x73x250

## Code No. N-753 Stepped Strap Clamp



- Hardened & Tempered
- Black Finished

MODEL	SUITABLE FOR BOLT	OVERALL SIZE
NSSC 12-65	M 12	15x3 0x65
NSSC 12-100	M 12	19x38 x100
NSSC 12-150	M 12	19x38 x150
NSSC 16-125	M 16	24x48x125
NSSC 16-160	M 16	24x4 8x16
NSSC 20-160	M 20	30x60 x160
NSSC 24-200	M 24	36x73x200

## Code No. N-754 Tapped End Strap Clamp



- Hardened & Tempered
- Black Finished

MODEL	STUD/T-BOL T	CLAMP
NTEC-12S	12-100	38x24 x110
NTEC -12T	12-12-100	38x24 x110
NTEC -14T	12-14-100	38x24 x110
NTEC-16S	16-125	48x30 x125
NTEC-16T	16-16-150	48x30x125
NTEC -20S	16-18 -150	60x36 x160
NTEC-18T	20-175	48x30x1 25
NTEC-22T	20-20-150	60x36x160
NTEC -20T	20-22-1 50	60x36x160
NTEC-24T	24-200	73x36x200
NTEC- 24S	24-24-210	73x36x200
NTEC-28T	24-28-210	73x36x200

## Code No. N-755 Mould Clamp



- Hardened & Tempered
  - Black Finished
- (with clamping stud & flanged nut)

MODEL	STUD	CLAMPING RANGE	CLAMP SIZE
NMC-12S	CS 12 -100	0-35	110x50
NMC-16S	CS 16 -125	0-40	135x60
NMC-20S	CS 20 -175	0-50	160 x70
NMC-24S	CS 24 -200	0-60	180 x80

## Code No. N-756 Mould Clamp



- Hardened & Tempered
  - Black Finished
- (with clamping T-Bolt & flanged nut)

MODEL	T-BOLT	CLAMPING RANGE	CLAMP SIZE
NMC-12T	TB 12-12-100	0-25	110x50
NMC-14T	TB 12-14-100	0-25	110x50
NMC-16T	TB 16-16-150	0-40	125 x60
NMC-18T	TB 16-18-150	0-40	125 x60
NMC-20T	TB 20-20-150	0-50	160 x70
NMC-22T	TB 20-22-150	0-50	160x70
NMC-24T	TB 24-2 4-210	0-60	180 x80
NMC-28T	TB 24-2 8-210	0-60	180 x80

### Code No. N-757 Universal Strap Clamp



- Hardened & Tempered
- Black Finished

MODEL	T-SLOT SIZE A	DØ X PITCH X L	CLAMP- PING RANGE B	LENGTH OF TCLAMP C	BREADTH OF CLAMP
USC-12A	12	M12 X 1.75 X 100	0-60	105	42
USC-12B	14	M12 X 1.75 X 100	0-60	105	42
USC-16A	16	M16 X 2.0 X 130	0-80	130	50
USC-16B	18	M16 X 2.0 X 130	0-80	130	50
USC-20A	20	M20 X 2.5 X 150	0-100	160	55
USC-20B	22	M20 X 2.5 X 150	0-100	160	55
USC-24A	24	M24 X 3.0 X 210	0-120	190	65
USC-24B	28	M24 X 3.0 X 210	0-120	190	65

### Code No. N-758 Laveling Jack



- Hardened & Tempered
- Black Finished

MODEL	H MIN. AT CLOSED POSITION	H MAX. AT OPEN POSITION	DIA AT BOTTOM	DIA AT TOP	DIA OF SCREW
NLJ-1A	75	100	48	38	M-24
NLJ-1B	100	150	48	38	M-24
NLJ-2	120	170	48	38	M-24
NLJ-3	105	155	48	38	M-24

MODEL	H MIN. AT CLOSED POSITION	H MAX. AT OPEN POSITION	DIA AT BOTTOM
NLJ-HD-FB	NLJ-HD-FB	NLJ-HD-FB	NLJ-HD-FB
L	MOUNTING SLOT WIDTH W	DIA AT TOP	DIA OF SCREW
130	18	50	32Ø

### Code No. N-759 U-Clamp



- Hardened & Tempered
- Black Finished

MODEL	D SUITABLE FOR BOLT	LENGTH	WIDTH	HEIGHT
TUC-12-160	M-12	160	38	24
TUC-16-200	M-16	200	48	30
TUC-20-250	M-20	250	62	38
TUC-24-250	M-24	250	62	38

### Code No. N-760 Step Block



- Hardened & Tempered - Black Finished

MODEL	H x L x W	HEIGHT MI N.	ADJUSTABLE HEIGHT MAX.
NSB 1	32x1 9x28	21	42
NSB 2	67x37x28	38	95
NSB 3	117x68x28	70	180
NSB 4	67x37x47	38	95
NSB 5	117x68x47	70	180
NSB 6	156x92x47	94	230

### Code No. N-761 Flange Nut



- Hardened & Tempered - Black Finished

MODEL	THREAD SIZE	SPANNER SIZE	LENGTH
NFN-12	M 12	19	18
NFN-16	M 16	24	24
NFN-20	M 20	30	30
NFN-24	M 24	36	36

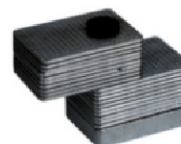
### Code No. N-762 & 763 Long Nut & Ext. Nut



- Hardened & Tempered - Black Finished

MODEL	THREAD SIZE	SPANNER SIZE	LENGTH LONG NUT	LENGTH EXT. NUT
NLN-12	M 12	19	18	36
NLN-16	M 16	24	24	48
NLN-20	M 20	30	30	60
NLN-24	M 24	36	36	72

### Code No. N-764 Adjustable Support Plates



- Hardened & Tempered - Black Finished

MODEL	MAXIMUM HEIGHT	PLATES THICKNESS	PLATE OVERALL SIZE	SIZE OF CLAMP
NASP-250	50	2	50x35	25x35
NASP-2100	100	2	50x35	25x35
NASP-2150	150	2	50x35	25x35
NASP-L-250	50	2	60x50	35x50
NASP-L-2100	100	2	60x50	35x50
NASP-L-2150	150	2	60x50	35x50

**Code No. N-766P**  
**Plain Washer/C-Washer**



- Hardened & Tempered - Black Finished

MODEL	OUTER DIA	INNER DIA	THICKNESS
NPW-12	35	14	5
NPW-16	45	18	7
NPW-20	50	22	7
NPW-24	60	26	8

MODEL	OUTER DIA	INNER DIA	THICKNESS
NCW-12	50	10	12
NCW-16	63	12	16
NCW-20	80	12	20
NCW-24	100	12	24

**Code No. N-768**  
**T-NUT**



- Hardened & Tempered - Black Finished

MODEL	THREAD SIZE	T SLOT SIZE	WIDTH
NTN 14 - 12	M 12	14	22
NTN 16 - 12	M 12	16	25
NTN 18 - 12	M 12	18	28
NTN 18 - 16	M 16	18	28
NTN 20 - 16	M 16	20	32
NTN 22 - 16	M 16	22	35
NTN 22 - 20	M 20	22	35
NTN 24 - 20	M 20	24	40
NTN 36 - 24	M 24	28	44
NTN 28 - 24	M 24	36	54

**Code No. N-765M**  
**Mould Stud**



- Hardened & Tempered - Black Finished

MODEL	DIA OF THREAD	TOTAL LENGTH	THREAD LENGTH
NMS 12-100	M-12	100	30-40
NMS 12-125	M-12	125	30-50
NMS 12-150	M-12	150	30-65
NMS 12-175	M-12	175	30-80
NMS 16-125	M-16	125	40-50
NMS 16-150	M-16	150	40-65
NMS 16-175	M-16	175	40-80
NMS 16-200	M-16	200	40-100
NMS 20-150	M-20	150	50-60
NMS 20-175	M-20	175	50-70
NMS 20-200	M-20	200	50-80
NMS 24-175	M-24	175	60-70
NMS 24-200	M-24	200	60-80
NMS 24-225	M-24	225	60-90

**Code No. N-765-C**  
**Clamping Stud**



- Hardened & Tempered - Black Finished

MODEL	DIA OF THREAD	TOTAL LENGTH	THREAD LENGTH
NCS 12-75	M-12	75	15-48
NCS 12-100	M-12	100	15-63
NCS 12-125	M-12	125	15-75
NCS 12-150	M-12	150	15-95
NCS 12-175	M-12	175	15-110
NCS 12-200	M-12	200	15-125
NCS 12-250	M-12	250	15-160
NCS 12-300	M-12	300	15-190
NCS 16-100	M-16	100	19-63
NCS 16-125	M-16	125	19-75
NCS 16-150	M-16	150	19-95
NCS 16-200	M-16	200	19-125
NCS 16-250	M-16	250	19-160
NCS 16-300	M-16	300	19-190
NCS 20-150	M-20	150	27-95
NCS 20-200	M-20	200	27-125
NCS 20-250	M-20	250	27-160
NCS 20-300	M-20	300	27-190
NCS 24-150	M-24	150	35-95
NCS 24-200	M-24	200	35-125

**Code No. N-765-C**  
**T-Bolt**



- Hardened & Tempered - Black Finished

MODEL	DIA OF THREAD	T-SLOT SIZE	TOTAL LENGTH	HEAD	HEAD THICKNESS
NTB 12-12-80	M-12	12	80	18	7
NTB 12-12-100	M-12	12	100	18	7
NTB 12-12-160	M-12	12	160	18	7
NTB 12-14-80	M-12	14	125	22	8
NTB 12-14-100	M-12	14	100	22	8
NTB 12-14-125	M-12	14	125	22	8
NTB 12-14-160	M-12	14	160	22	8
NTB 12-14-200	M-12	14	200	22	8
NTB 16-16-100	M-16	16	100	25	9
NTB 16-16-150	M-16	16	150	25	9
NTB 16-16-200	M-16	16	200	25	9
NTB 16-18-100	M-16	18	100	28	10
NTB 16-18-150	M-16	18	150	28	10
NTB 16-18-200	M-16	18	200	28	10
NTB 16-18-250	M-16	18	250	28	10
NTB 16-18-300	M-16	18	300	28	10
NTB 20-20-110	M-20	20	110	32	12
NTB 20-20-150	M-20	20	150	32	12
NTB 20-20-200	M-20	20	200	32	12
NTB 20-22-110	M-20	22	110	35	14
NTB 20-22-150	M-20	22	150	35	14
NTB 20-22-200	M-20	22	200	35	14
NTB 20-22-300	M-20	22	300	35	14
NTB 24-24-150	M-24	24	150	40	16
NTB 24-24-200	M-24	24	200	40	16





Manufactured by:  
**Y.H. TOOLS MANUFACTURERS PVT. LTD., INDIA**  
Website: [www.niconvices.com](http://www.niconvices.com) Email: [info@niconvices.com](mailto:info@niconvices.com)